

EasyLive Plus APP

User Manual



Thank you for selecting our products. Please read the User Manual carefully before using this product. This User Manual will provide you with correct instructions for operation and operation.

Statement

- Our company will update this manual according to the reinforcement and change of product functions, also regularly improve and update the software and hardware products described in this manual. The updated information will be reflected in the latest version of the manual without further notice.
- The change of product parameters will not be further notified as our company continues to adopt new technologies.
- This manual is only for clients' reference and guidance and cannot be ensured to be exactly the same as real products, real products shall prevail in terms of practical application.
- All words, tables and figure information in this manual is protected by national laws, no private duplication is allowed without permission.
- Our company retains the copyright and ultimate interpretation of this manual.

Contents

EasyLive Plus APP	1
1. Introduction	- 1 -
1.1. Purpose.....	- 1 -
1.2. Terms and abbreviations.....	- 1 -
2. Software Overview	- 1 -
2.1. Software application.....	- 1 -
2.2. Software installation.....	- 1 -
2.3. Software environment.....	- 1 -
2.4. Hardware environment.....	- 2 -
3. Login	- 2 -
3.1. Quick Registration.....	- 2 -
3.2. Forgotten my password.....	- 3 -
3.3. Account Login.....	- 4 -
3.4. Area Selection.....	- 4 -
4. Device Management	- 5 -
4.1. Device List.....	- 5 -
4.2. Adding Device.....	- 6 -
4.3. Configuration.....	- 15 -
4.4. Playback.....	- 26 -
4.5. Device play / stop interface.....	- 28 -
4.6. Device Sharing.....	- 28 -

4.7.	More.....	- 29 -
5.	Alarm Management.....	- 34 -
5.1.	List of Alarm.....	- 36 -
5.2.	Alarm Enquiry.....	- 36 -
5.3.	Alarm details.....	- 37 -
6.	User Management.....	- 38 -
6.1.	Photo.....	- 39 -
6.2.	Sharing.....	- 40 -
6.3.	Account Management.....	- 41 -
6.4.	Local Configuration.....	- 42 -
6.5.	About Us.....	- 47 -
7.	Common Tool.....	- 48 -
7.1.	Device Recovery Password.....	- 48 -
7.2.	Batch Activation.....	- 48 -
7.3.	Batch modify IP.....	- 49 -
7.4.	Wi-Fi Configuration.....	- 50 -

1. Introduction

1.1. Purpose

This User Manual is compiled on the basis of EasyLive Plus Platform. With an attempt to provide brief description on the functions of this platform, assist the user to systematically learn about the operation procedures, this Manual is hereby compiled as a reference.

[Note] The product will update from time to time without prior notice.

1.2. Terms and abbreviations


None

2. Software Overview

2.1. Software application

EasyLive Plus is a mobile phone app developed on the basis of Android and iOS platform, and is mainly used for management of remote equipment in batch, preview of remote video, reception of the pushed alarms and equipment settings.

2.2. Software installation

In equipment IE interface or GUI interface, the user can click “”, to enter into the QR code interface and download the software by scanning the App's QR code.

2.3. Software environment

Mobile phone: Android phones support V6.0 and above, while iOS

phones support V9.0 above.

2.4. Hardware environment


Mobile phone: iPhone, Android devices

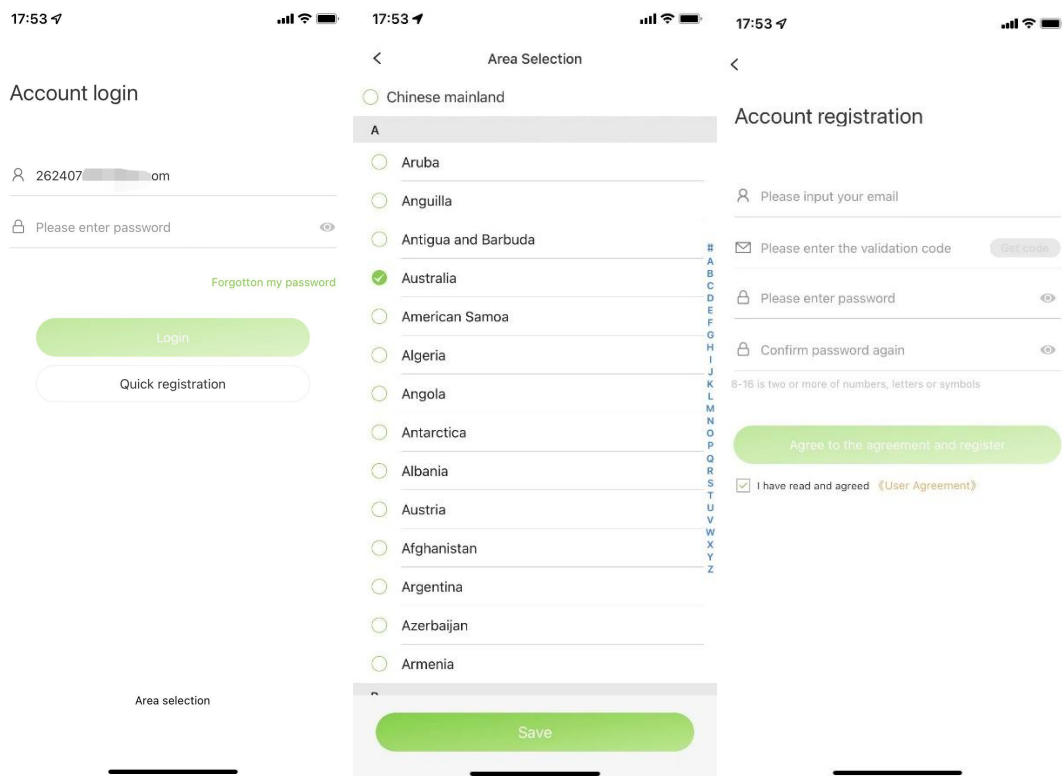
P2P server: 1 set of VM100

Network device: Gigabit network switch

3. Login

3.1. Quick Registration

After Installation of Easylive Plus application, click “” icon to running the APP. Choose correct “Area Selection” , and then click “Register” button to make an account registration, follow the requirements to fill the necessary information to register cloud account.



Note:

-
- Before your registration, please read and check the “User Agreement” .
 - The account name can be the e-mail address used for registration, and the account name is unique.
 - The password combinations of 8-16 digits of numbers, letters or symbols.
 - After the area changed, the Easylive Plus need to be restarted to take effective.
 - The area selection should be the same with the device installation place.

3.2. Forgotten my password

The password can be reset via registration e-mail address. The user can input the registration e-mail address to verify the account information, and after passing the verification, the user can input new password to reset the password.

17:53

<

Password resetting
Please enter your email address to help you reset your password.

Please input your email

Please enter the validation code [Get code](#)

Please enter password

Confirm password again

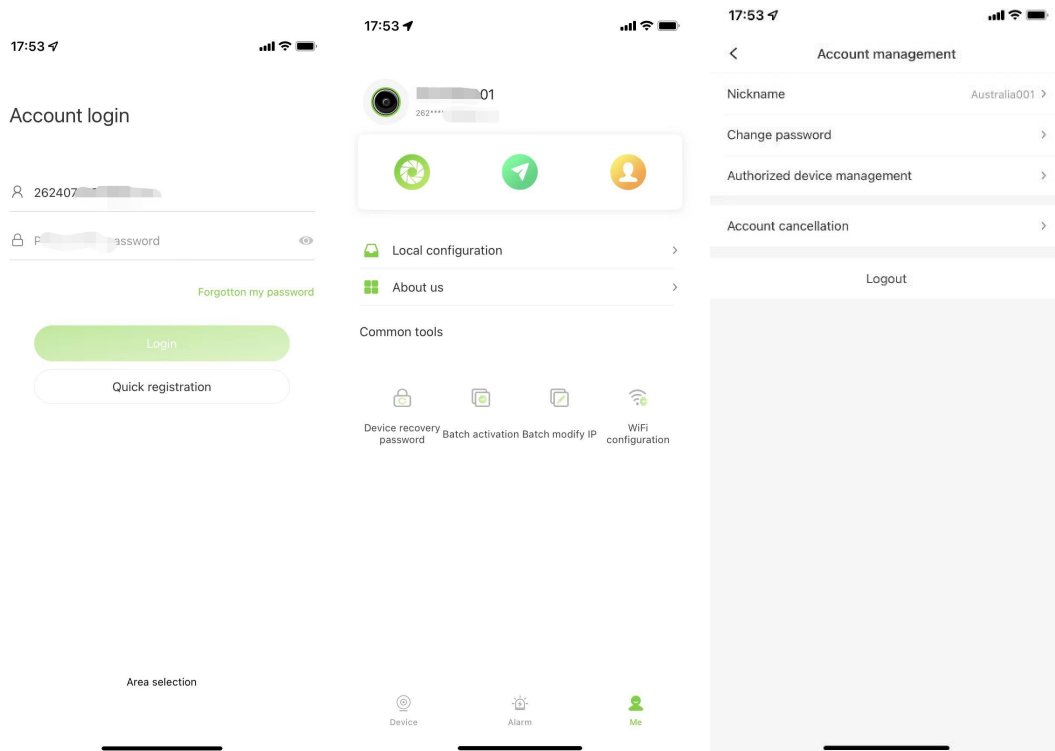
8-16 in two or more of numbers, letters or symbols

[Password resetting](#)

Note: The password combinations of 8-16 digits of numbers, letters or symbols.

3.3. Account Login

Use the registered account to login into the mobile, and check the account detail information of it as below,



3.4. Area Selection

On Adaptive mode, The application will find the suitable server location automatically, while some time the device installation area and mobile in different continents or countries, then the area selection needs to choose manually. Then it can make the system working correctly.

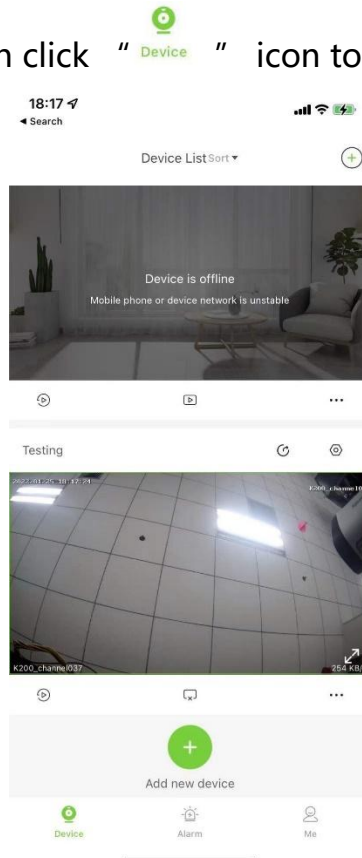
Note

- For remote checking your device, make sure your mobile APP and

device installation network in the same area selection. For example, your device was installed in Europe, while you and your mobile in Asia, then your mobile area selection should be " Europe" .

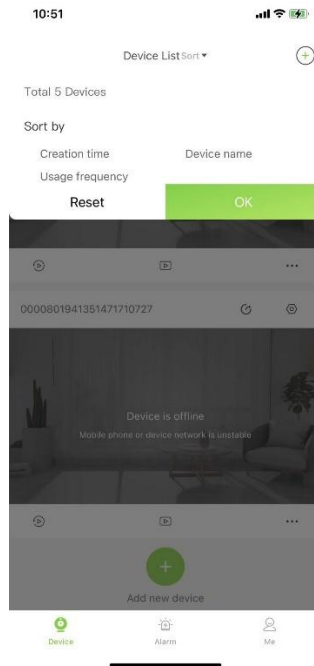
4. Device Management

After logged in, user can click " Device " icon to manage devices.



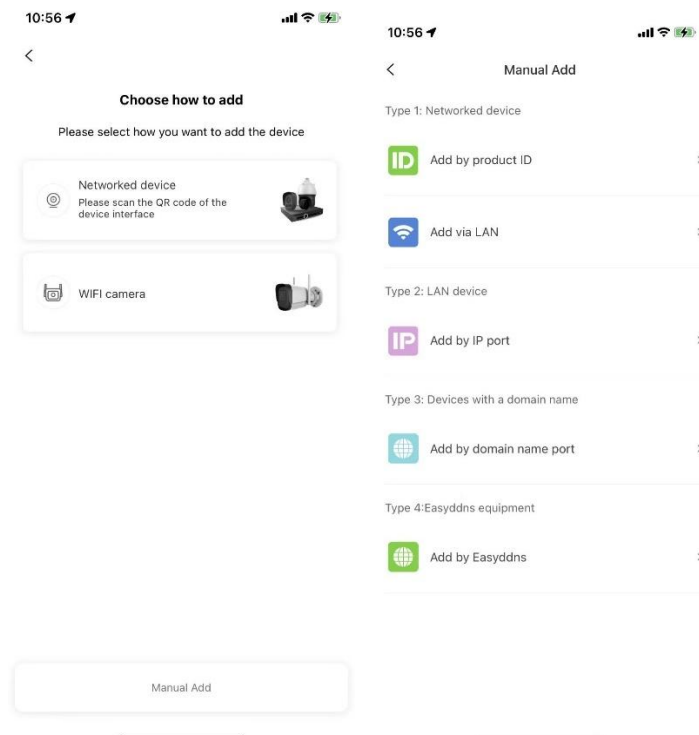
4.1. Device List

Click the top page of device list, it can display the total added device quantity number, and sort these devices via creation time / Device Name / Usage Frequency.



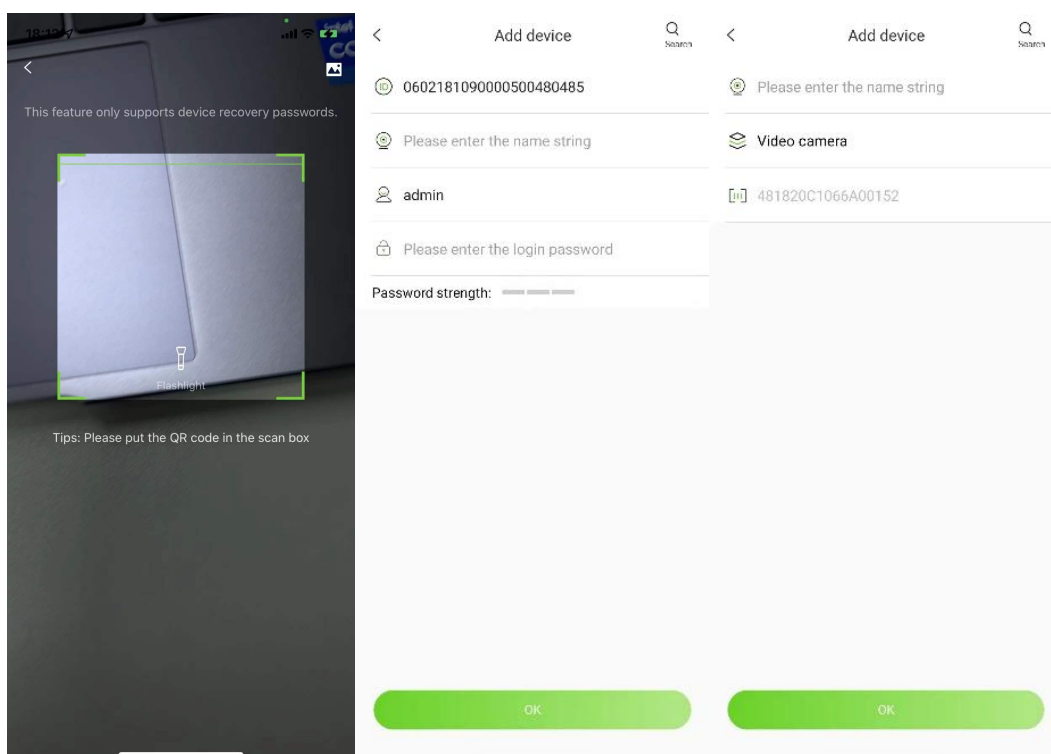
4.2. Adding Device

Click the “+” or “+” in top right corner of device list page to add device in different modes.



4.2.1. Network device

When selecting and adding surveillance camera, surveillance NVR and surveillance dome camera, the user shall first enter into QR code scanning interface, and after scanning the QR code of devices, set device name and other related information to add device (the content to be added varies for different equipment; please be subject to the actual scanning interface). Click "OK" to save the current settings.



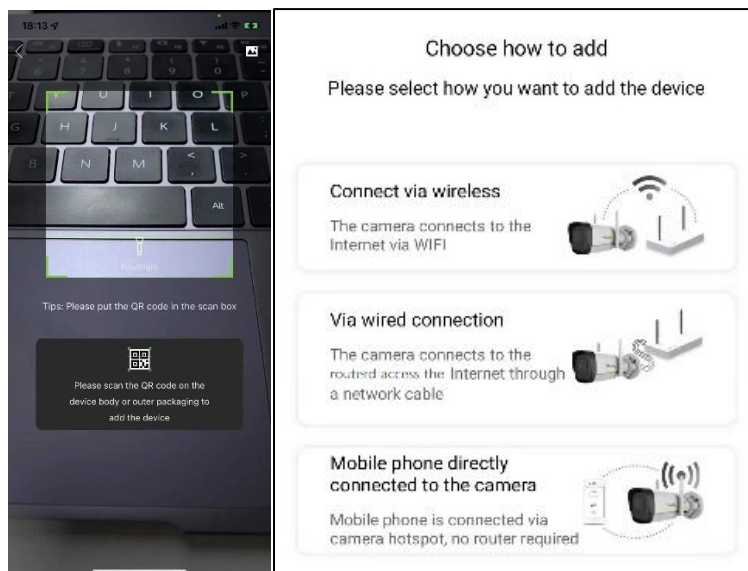
Note:

- QR code can be acquired by logging in the device IE or NVR local UI or identifying the image imported from photo album.
- P2P device is mainly based on product factory ID to identified products. Factory ID can be found in Version info page, You can enter it manually.

-
- Alicloud device is mainly based on product S/N number to identified products.
 - Easylive Plus cloud service is focus on alicloud, the products which support alicloud will have better performance, than the old P2P devices.

4.2.2. WiFi camera

After plugging TF card into Wi-Fi camera, the user shall click the option of “Wi-Fi camera” , scan the QR code on the device body, and complete the adding and connection according to the steps popped out from the app, and after completing the adding and connection, the user can check the real-time video via Easylive Plus.



WiFi equipment can be added in three modes:

1. Connect via wireless

Video camera will connect router by WIFI. Choose the name of WIFI to be

connected following the prompted procedures of software. After entering correct password of the router, the client side will complete equipment configuration automatically.

2. Via wired connection

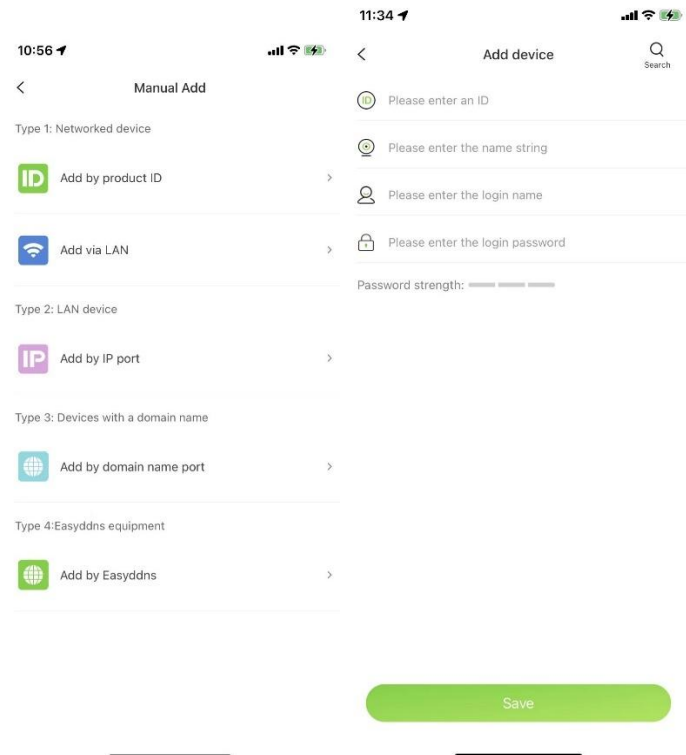
The video camera will connect router by physical network cable, Follow prompted procedures of software and the software will complete equipment configuration automatically.

3. Mobile phone directly connected to the camera

Mobile phone connects video camera by hotspot rather than router. Follow prompted procedures of software and WIFI video camera will complete equipment configuration automatically.

4.2.3. Add by Product ID

Description: This kind of device adding mode is suitable for surveillance camera, surveillance NVR and surveillance dome camera that have been accessible to the public network.

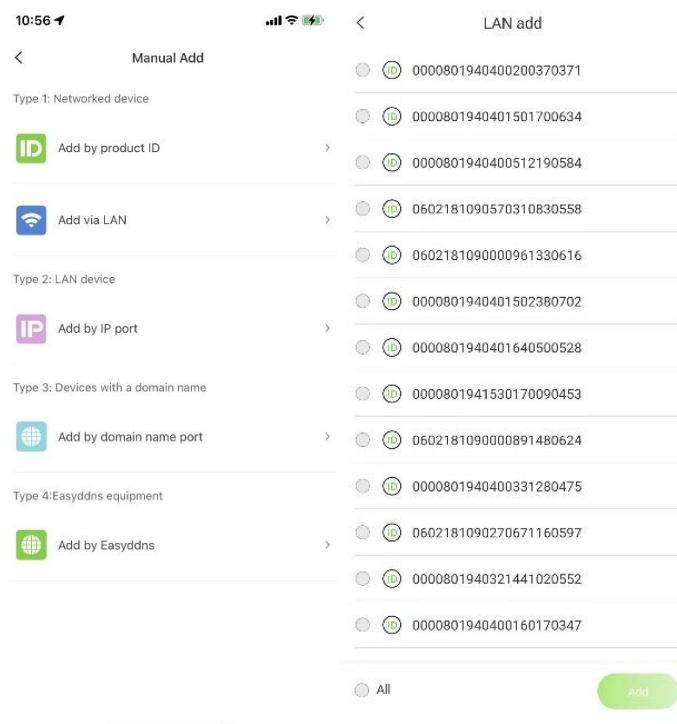


After entering into the QR code interface, the user can click “Manual Add” for selecting the mode of manually adding devices to enter into the connection type interface, and then the user can click the option of “Add by product ID” to enter into the interface of adding device ID. After inputting correct device ID (generally 22-digit numbers), custom name, user name, password (must be two or more combinations of numbers and letters) and clicking “OK” button, the user can successfully add the surveillance device. When clicking “Preview” button, the APP will start to broadcast the video recorded by this device.

4.2.4. Add via LAN

Description: This kind of device adding mode is suitable for surveillance camera, surveillance NVR and surveillance dome camera that

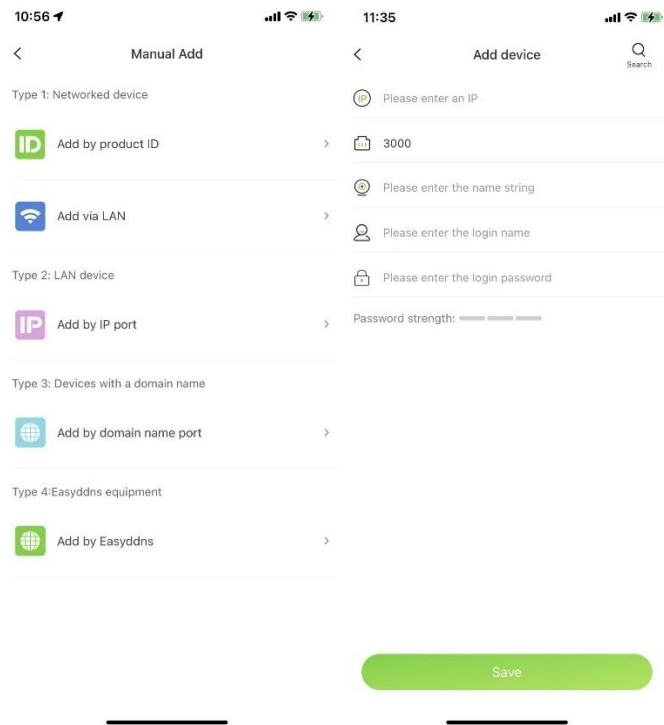
can access to the same LAN environment.



After selecting "Add via LAN" , or selecting certain connection type on the manual adding interface, and then clicking "Q" button, the APP will skip to device searching interface for automatically searching all devices which are in the same LAN. When the user clicks one device ID, it will return to the device adding interface, and after inputting correct username and password, the user can successfully add it.

4.2.5. Add by IP port

Description: This kind of device adding mode is suitable for surveillance camera, surveillance NVR and surveillance dome camera that have been connected to the public IP, Easylive plus can add that device via public IP and ports.

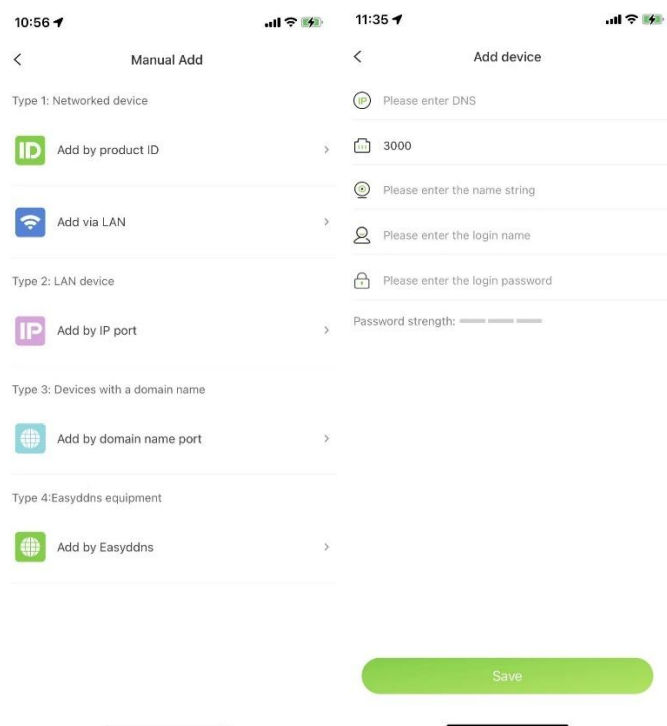


After entering into the QR code interface, the user can click “Manual Add” for selecting the mode of manually adding devices to enter into the connection type interface, and then the user can click the option of “Add by IP port” to enter into the interface of adding device IP. After inputting correct device IP address, custom name, user name, password (must be two or more combinations of numbers and letters) and clicking “OK” button, the user can successfully add the surveillance device. When clicking “Preview” button, the APP will start to preview the real time video stream.

4.2.6. Add by domain name port

Description: This kind of device adding mode is suitable for surveillance

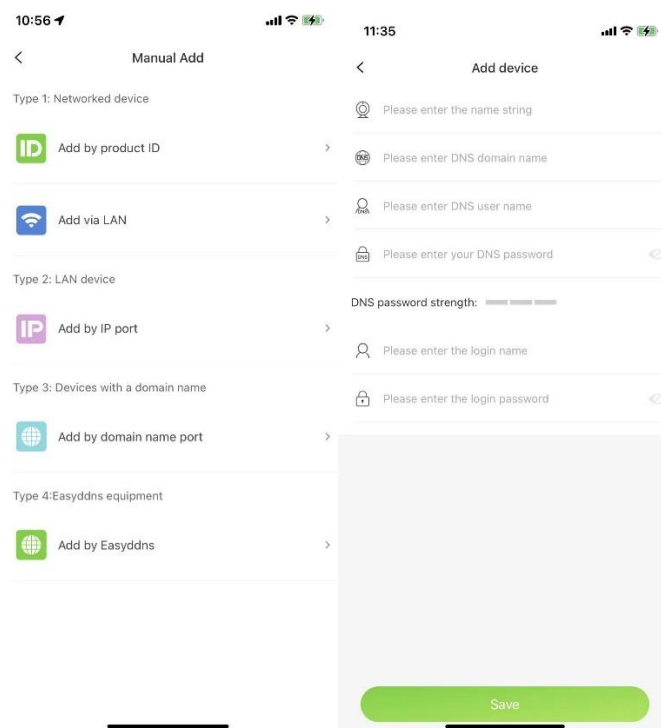
camera, surveillance NVR and surveillance dome camera with domain name and accessible to the public network.



After entering into the QR code interface, the user can click “Manual Add” for selecting the mode of manually adding devices to enter into the connection type interface, and then the user can click the option of “Add by domain name port” to enter into the interface of adding device domain name. After inputting correct domain name, custom name, user name, password (must be two or more combinations of numbers and letters) and clicking “Save” button, the user can successfully add surveillance device. When clicking “Preview” button, the APP will start to broadcast the video recorded by this device.


4.2.7. Add by Easyddns

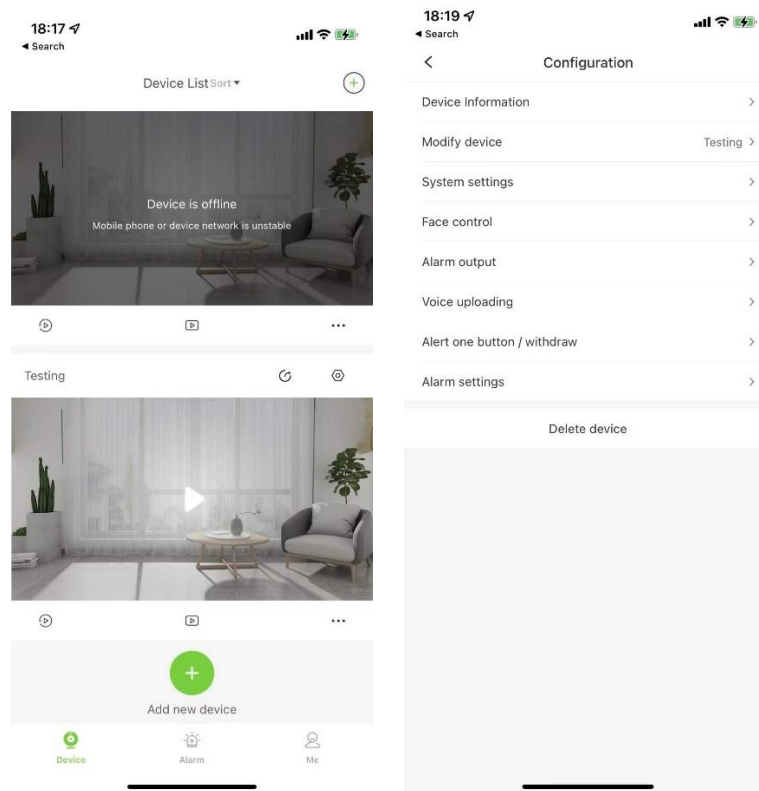
Description: This kind of device adding mode is suitable for surveillance camera, surveillance NVR and surveillance dome camera that have been accessible to the public network.



After entering into the QR code interface, the user can click “Manual Add” for selecting the mode of manually adding devices to enter into the connection type interface, and then the user can click the option of “Add by EasyDDNS” to enter into the interface of adding device domain name. After customizing the name of device, inputting correct DNS domain name, DNS user name, DNS password as well as user name and password (must be two or more combinations of numbers and letters) for login and clicking “OK” button, the user can successfully add surveillance device. When clicking “Preview” button, the APP will start to broadcast the video recorded by this device.

4.3. Configuration

Choose one device from the device management list, click the right corner icon “” to go to the setting page of that device.

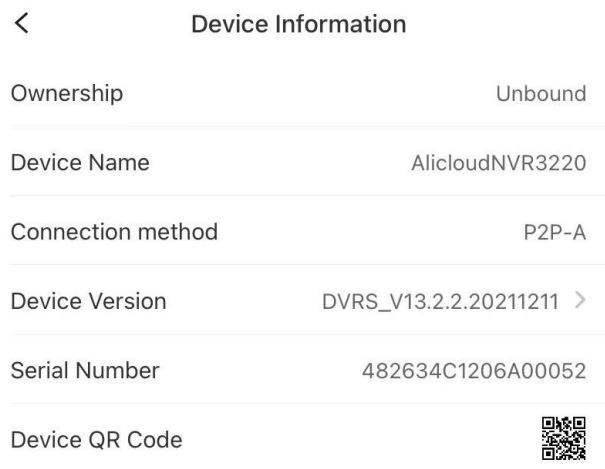
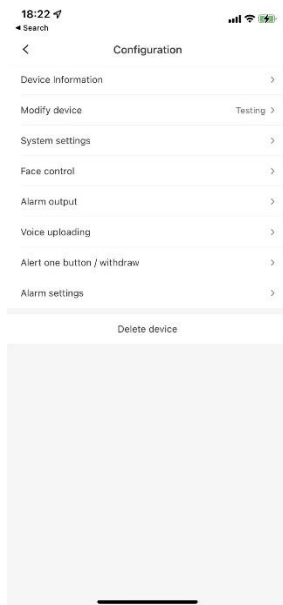


Note,

Different devices support different features, and it can display different configuration items, please base on your real connection device to make configuration of device.

4.3.1. Device Information

Click “Device Information” to get the device bind status, name, connection mode, current version and other related information of the device.

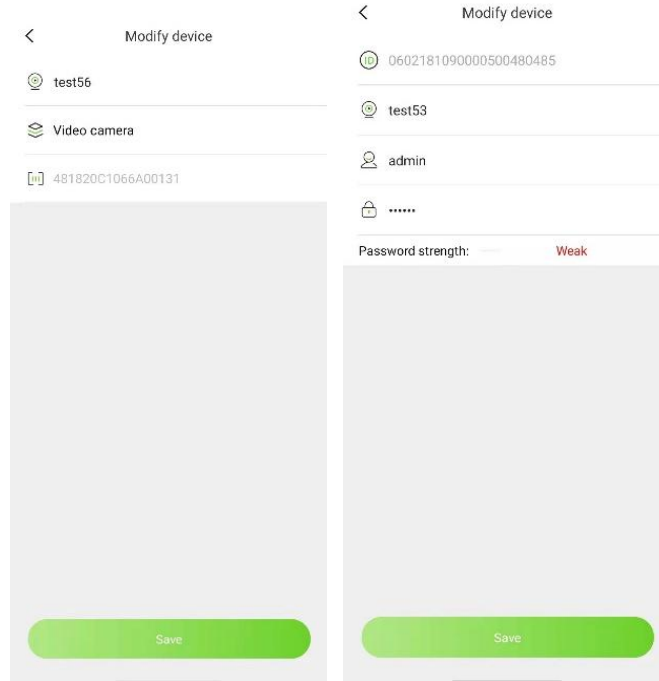


Notes,

- There will have a reminder once some new firmware upload into the cloud upgrading server.
- Click device QR code to enter the page of QR code saving. Click "Save to Album" to save it.

4.3.2. Modify Device

Click "Modify Device" , device name, user name and password can be modified.



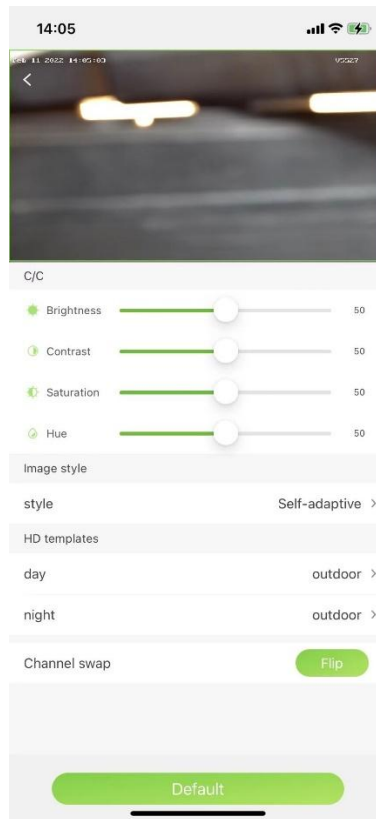
4.3.3. Channel Name

The name of equipment channel can be modified by clicking channel name. Click “Save” to complete the modification.



4.3.4. Image Adjustment

By clicking “Image Adjustment” , users can adjust color parameters, set image style, choose high-definition template and rotate video.

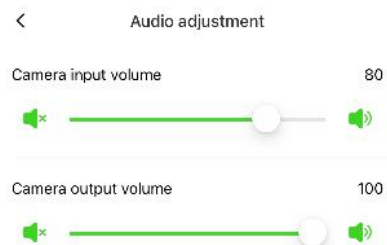


Note:

Channel swap can rotate the image with 180°.

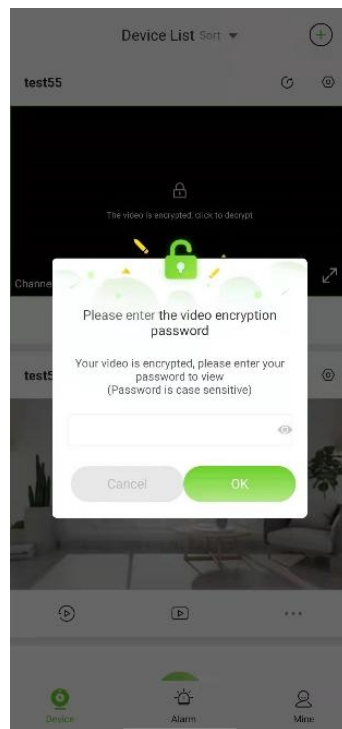
4.3.5. Audio Adjustment

Click "Audio adjustment", it can adjust camera input volume and camera output volume.



4.3.6. Video Encryption

Once the video stream was encrypted, then if you want to preview the live video stream, it will have a pop-up to remind and input the decrypted password of the video stream.

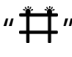



4.3.7. Early-warning

Some models support Early-warning, click "Early-warning" , users can choose "Early-warning Setting" , "Alarm link voice" , "Strong light warning" and "Laser Warning" .



Note,

[Early-warning Setting]: Click “” to enter alert settings interface. Alarm pre-arranged planning can be enabled. Linked settings and cloud platform control can be operated. “” indicates alarm.

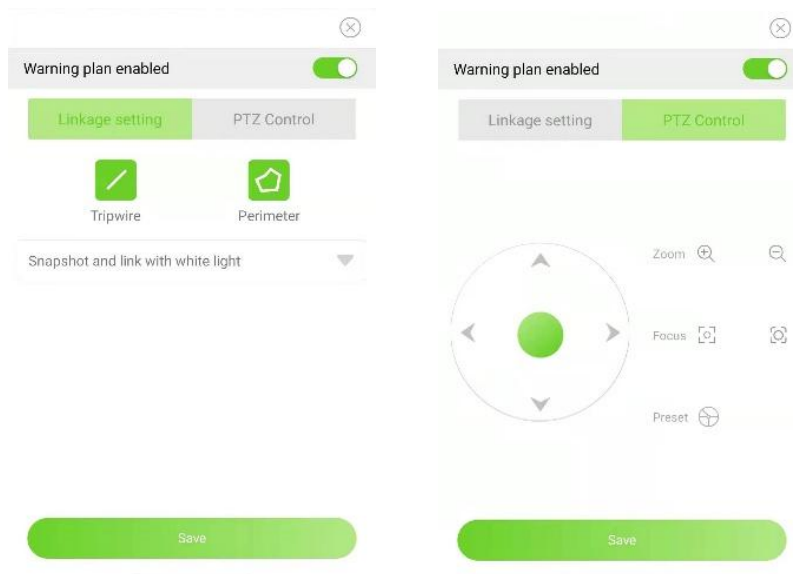


Fig. 4.3.7.2

[Alarm link voice]: By clicking “”, the corresponding front end gives alert; “” means that the function is not supported.

[Strong light warning]: By clicking “💡” , the corresponding front end gives out white light; “💡” means that the function is not supported.

[Laser Warning]: By clicking “⚡” , the corresponding front end gives out laser; by clicking “⚡” , the corresponding front end does not give out laser; “⚡” means that the function is not supported.

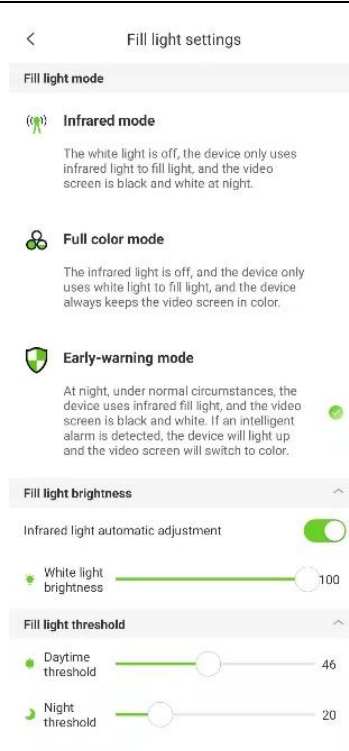
4.3.8. Alarm output

Some models support alarm output. By clicking “Alarm Output” , corresponding alarm output switch can be enabled.



4.3.9. Fill light setting

Click fill light setting item, it used to set the IR LED, warm light switch in color maker camera, and the light switch threshold setting.

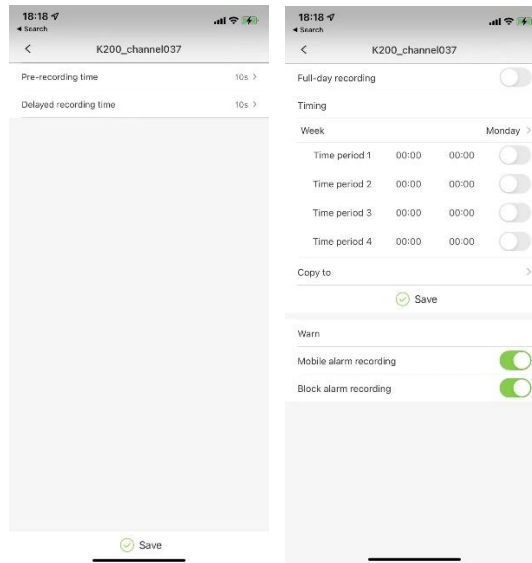


Note,

- Different camera has different light condition, color maker have warm light, and general camera have IR LED, both can be configured by the Easylive Plus APP.
- Early-warning mode only the Early-warning device can make it.

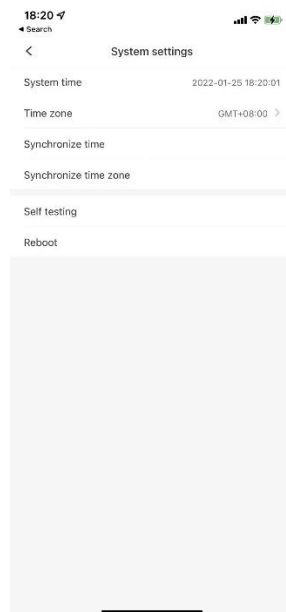
4.3.10. Recording configuration

Click the recording configuration, you can set the recording schedule include the pre-recording time, post recording time and recording period schedule.



4.3.11. System Settings

Click “System Settings” , the time and time zone of the device can be modified, also remote reboot device can support.



Click “Self-testing” , the connection device can be simply verified the operation is correct and device working status are good.

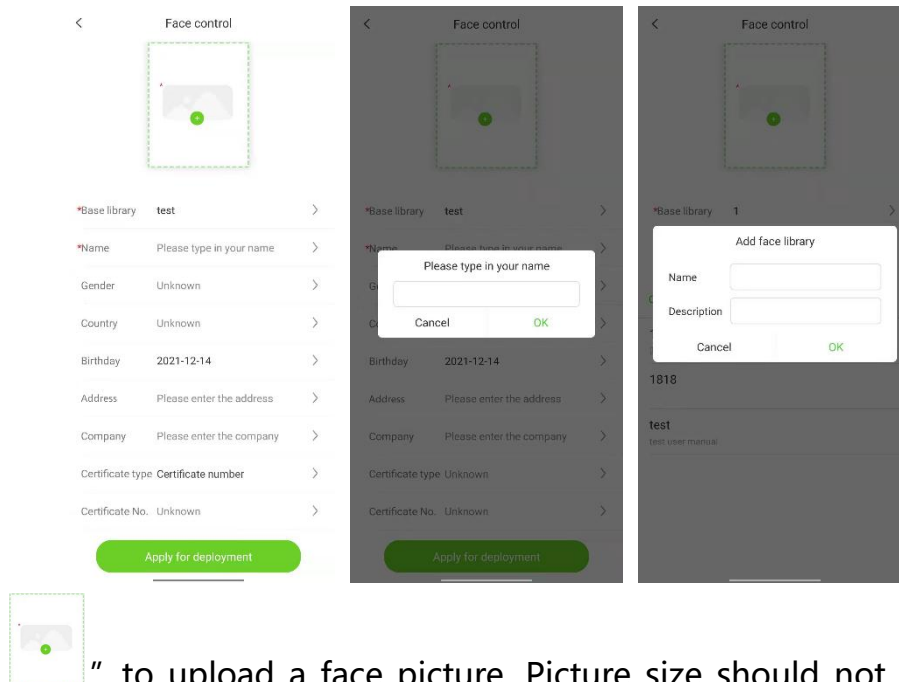
Click “reboot” , the device can be restarted.

After successful self-test or restart, the device may be offline for short

time, and then come back soon.

4.3.12. Face Control

Click "Face Control", you can create a face base, add face images and other operations.



Click " " to upload a face picture. Picture size should not be less than 100kb, greater than 1M.

Click "Base Library" to create a new Base Library. Enter a name and description to create a successful Base Library.

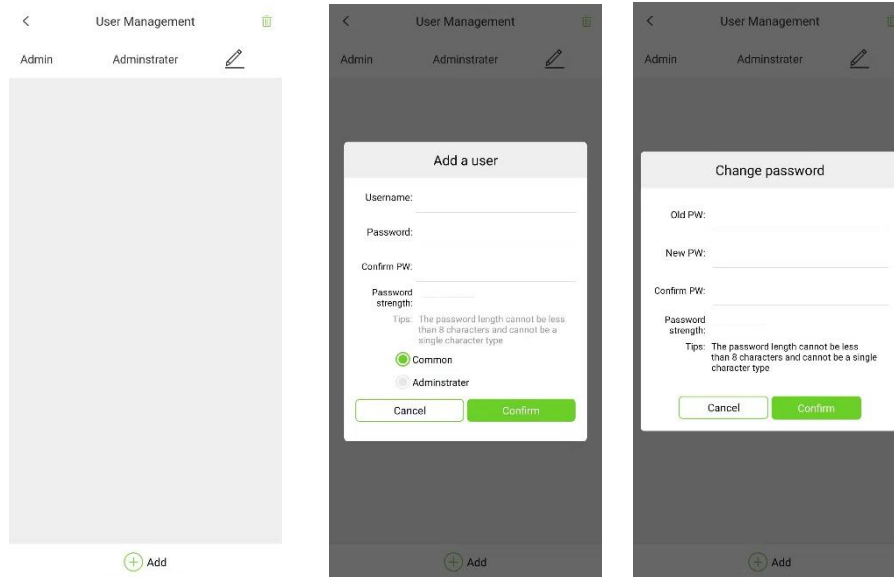
Click Name to enter the user name.

Click "Apply for Distribution Control" to upload the newly created face base and face picture information to the corresponding device.

Description: "Face picture", "Base library", "Name" are required.

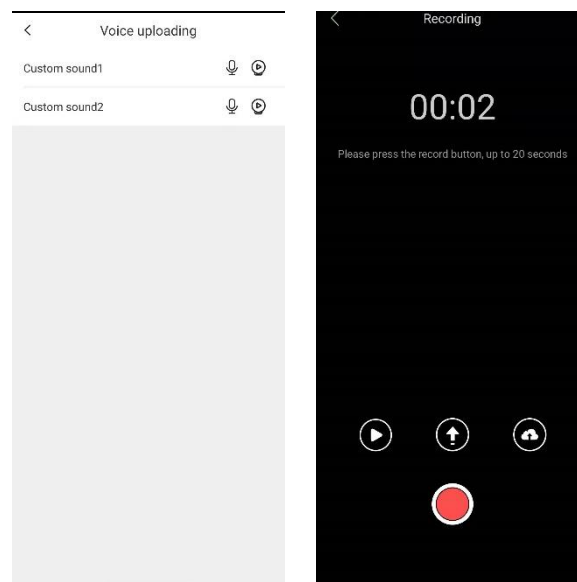
4.3.13. User Management

Click "user management" , user can be added, deleted or modified.





4.3.14. Voice Uploading

Click "Voice Uploading" , alert sound can be recorded and uploaded.



Click "🎤" , the interface of recording self-defined alert sound can be opened; by clicking "▶" , local recorded sound can be played.

Click “

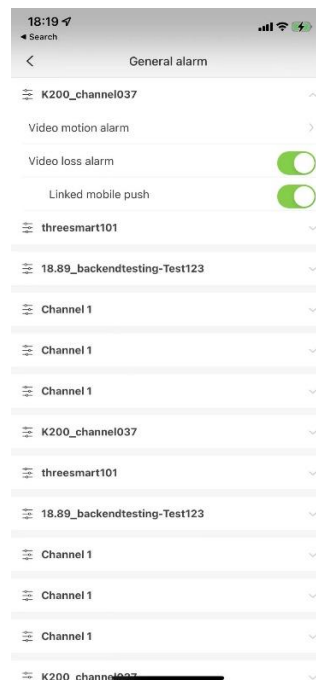
Click “

4.3.15. Report Punctually

After enabling hourly chime, the equipment will chime at each hour of the clock.

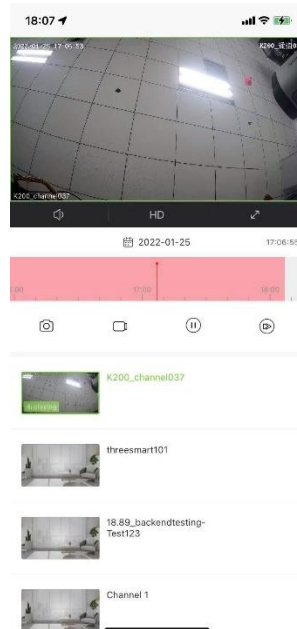
4.3.16. Alarm Settings

Click “Alarm Settings” , user can enable mobile alarm, blocking alarm and intelligent analysis alarm.








4.4. Playback

Click “⏮” playback, users can enter playback interface to find history video recording. at the same time, the video support manual snapshot, local recording, pause and speed up.



The interface related parameters as below:

Parameters	Description
	Turn on / off sound: turn on or off the sound playback collected by the equipment or monitoring point.
HD/SD	Switch resolution ratio of videos
	Full screen: video will spread to the whole screen after enabling it.
	SD card playback: play the videos stored in SD card
	Data controls. The user can modify the video

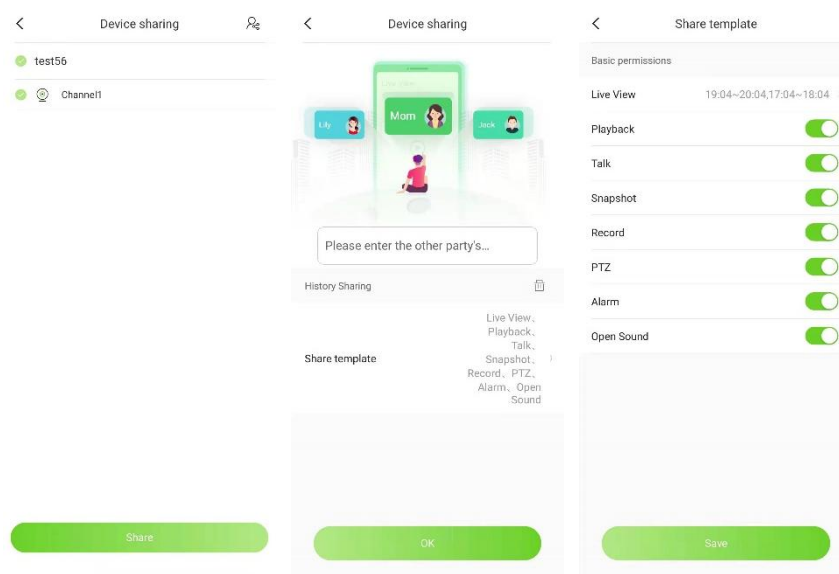
	query time after selecting the date.
	Capture: capture images in video playback.
	Video recording: record a part of video playback.
	Pause: pause the current video playback.
	Speed play: speed play of video for 2 times or 4 times.
	A list that shows detailed video playback: video playback can be switched by clicking it.

4.5. Device play / stop interface

Click “stop/play” , to stop / start view the currently video stream.

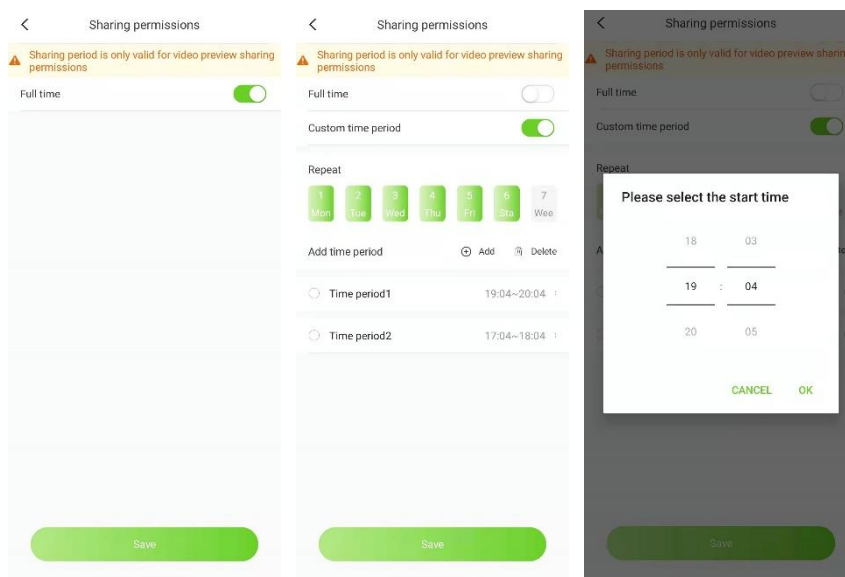
4.6. Device Sharing

Click “share” , the current equipment can be shared to other users.



Choose the channel of device sharing, click “share” , input registered e-mail address of the opposite side, set permissions of sharing including

video preview, playback, talkback, capture, recording, cloud platform, alarm and sound, click "save" to save the current settings.

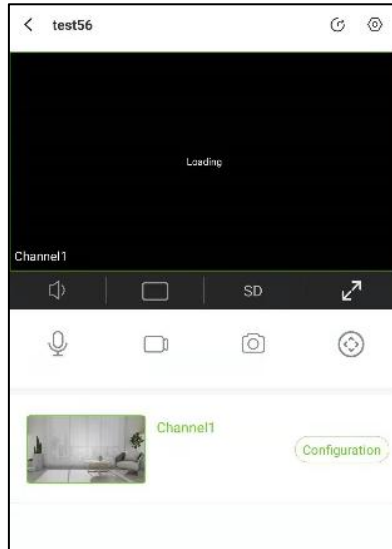


When setting video preview, sharing time slot can be set. The sharing time slot is 7x24 hours by default or can be defined by users.


Click "OK" to share the equipment successfully.

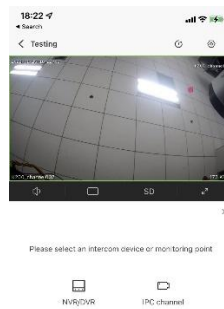
4.7. More

Click "..." , user can find more operation pages which support voice intercom, video recording, video capture, cloud platform control, configuration modification etc.



4.7.1. Intercom



Click “  ” , users can use mobile phone for voice talkback with the equipment or monitoring point.

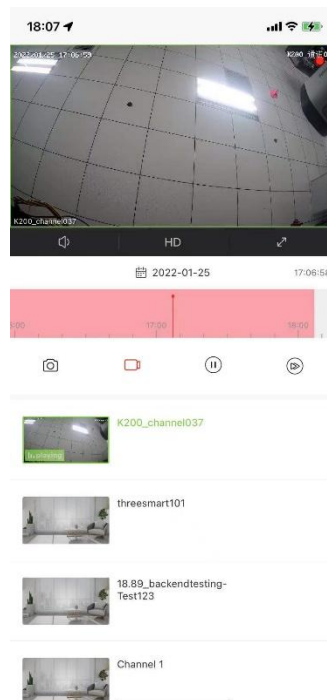


Notes,

- The microphone of mobile phone shall be permitted for talkback.
- Device or monitoring point shall support voice intercom.

4.7.2. Record

Click “”, video can be recorded; by clicking “”, stop the recording.



Note,

The recorded videos are saved in [My] -> [Album] -> [Video].


4.7.3. Snapshot

Click “”, images of current video preview can be captured.


Note,

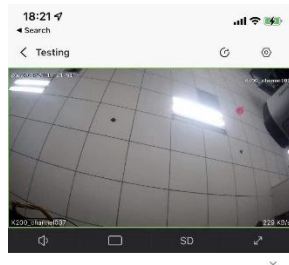
Captured images are saved in [Mine] -> [Album] -> [Photo].

4.7.4. PTZ Control

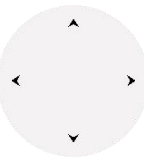




Upon selecting certain form playing the video, the user can click “” to turn on the PTZ control panel. It is featured with functions of



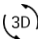

controlling the direction of PTZ, zooming, focusing and cruise presetting bit.

Click button “” to go to the PTZ control panel.



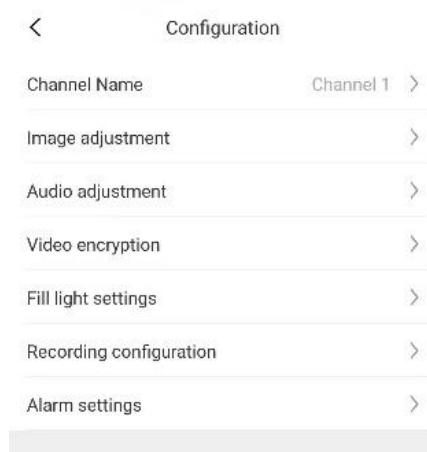
PTZ control panel can adjust the PTZ camera direction, zoom, focus, cruise and preset position.

Parameters	Description
	Button of cloud platform direction control.
	Zoom in/out
	NF/FF
	Cruise : The user can set the cruising route on IE, click “  ” button on the mobile phone client, select the cruising number, click “On” button, and the cloud platform will cruise according to the set route.

	<p>Presets : The user can click “” button to select the presetting bit number, and then click “Confirm” button to switch to the presetting bit.</p>
	<p>3D Positional : The user can click “” button, drag the video from upper left to lower right on the video form, and position the video at the dragging direction, zoom in the currently dragged area; drag the video from the lower right to the upper left on the video form, position the video at the dragging direction, and zoom out the currently dragged area.</p>

4.7.5. Configuration

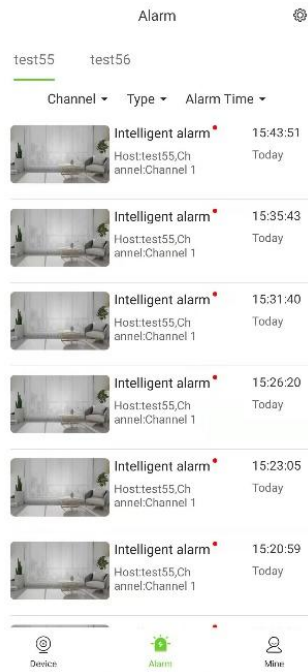
Click “Configuration” to go to configuration page.



including channel name change, image adjustment, recording configuration, voice upload and alarm settings.

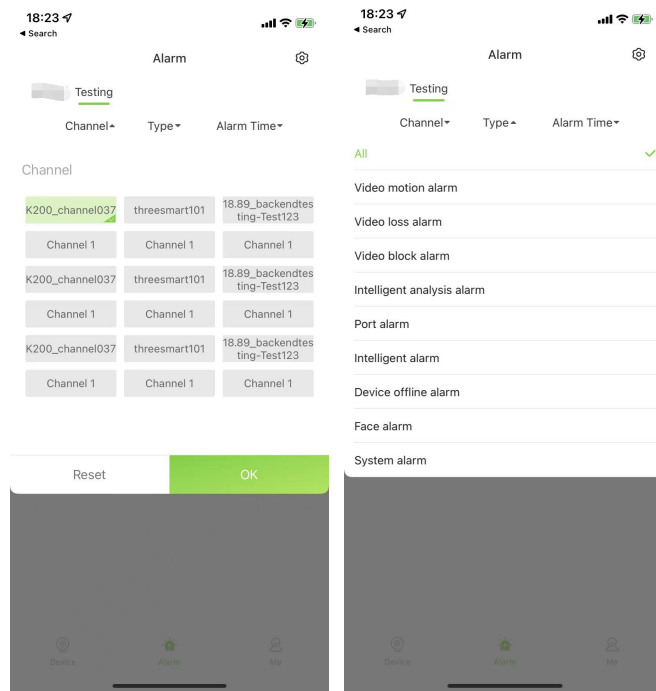
5. Alarm Management

Alarm notification detail list can be inquired on alarm management page.

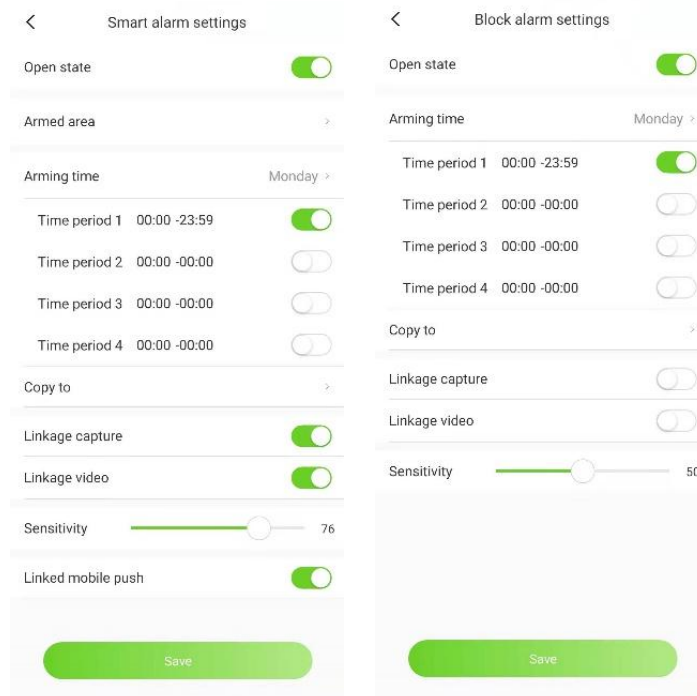


Click multiple choice button “☑” in top right corner, alarm information of current equipment or monitoring point can be marked for “read already” or deleted. To quit from the multiple choice page, click the button “✕” .

Click “⚙️” in top right corner, alarm push can be set as shown below:

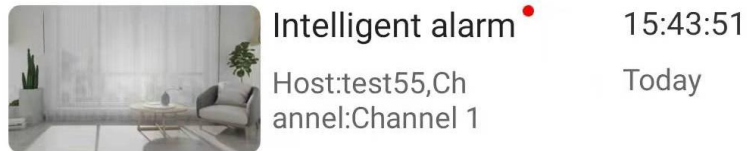


Some models support defense arrangement time setting for mobile alarm and blocking alarm, linked capture, linked video recording and linked mobile phone push enabling / disabling as shown below:



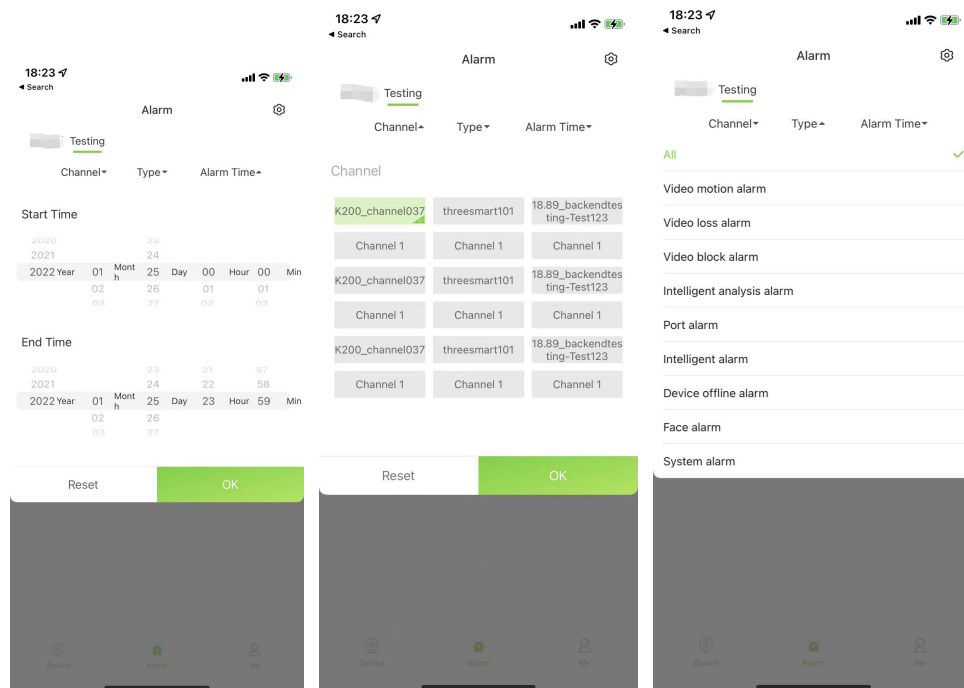
5.1. List of Alarm

The alarm notification information including alarm type, host name, channel name and alarm time.



5.2. Alarm Enquiry

Alarm information can be inquired according to channel name, alarm information, alarm time etc.



[Channel]: The user can select the host and channel to be inquired.

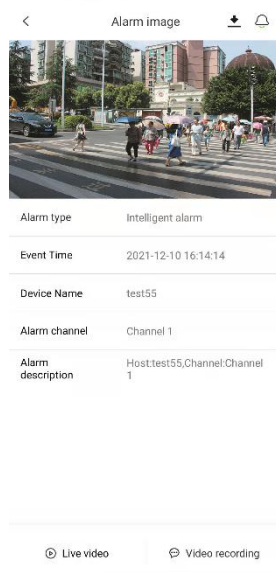
[Type]: It supports video motion alarm, video loss alarm, video occlusion alarm, intelligent analysis alarm, port alarm, intelligent alarm, device offline alarm and facial alarm.

[Alarm time]: The user can set the begin time and end time of alarm enquiry.

5.3. Alarm details

Choose a piece of alarm information to enter alarm detail page.


Real-time video and video playback in device channel can be found.




Note,





- To display the snapshot/video recording, it required the device set snapshot linkage action, and the snapshot can be stored.

5.3.1. Live Video


The user can check the real-time video of the current alarm device by clicking “” .

Interface-related parameters are as below:



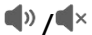

Parameters	Description
	Snapshot

	Recording
	Speaking
	Turn on/off the voice
	Resolution switch (high definition- HD /smooth definition- SD)

5.3.2. Video Recording

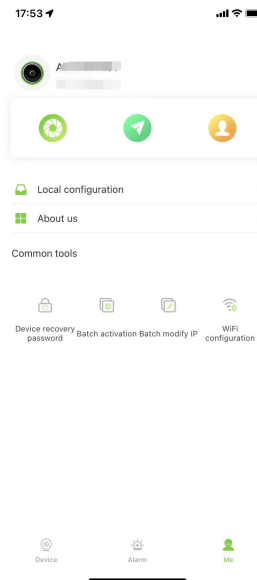
When the user clicks “”, the APP will go to the alarm playback interface, and starts to play previous 30s video and post-recording, the user can drag the time shaft and slide to any moment among the current period to start play.

Interface-related parameters are as below:


Parameters	Description
	Snapshot
	Recording
	Turn on/off the voice
	Resolution switch (high definition- HD /smooth definition- SD)

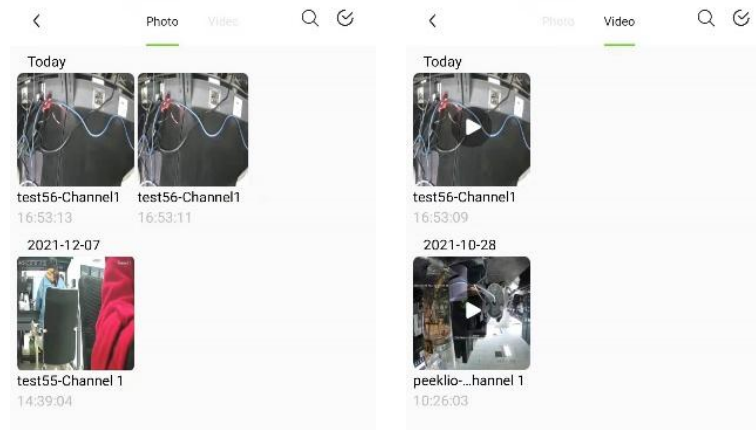
6. User Management


Local manual snapshot, video clip, my share, account information, local configuration and common tools can be found on user management interface.

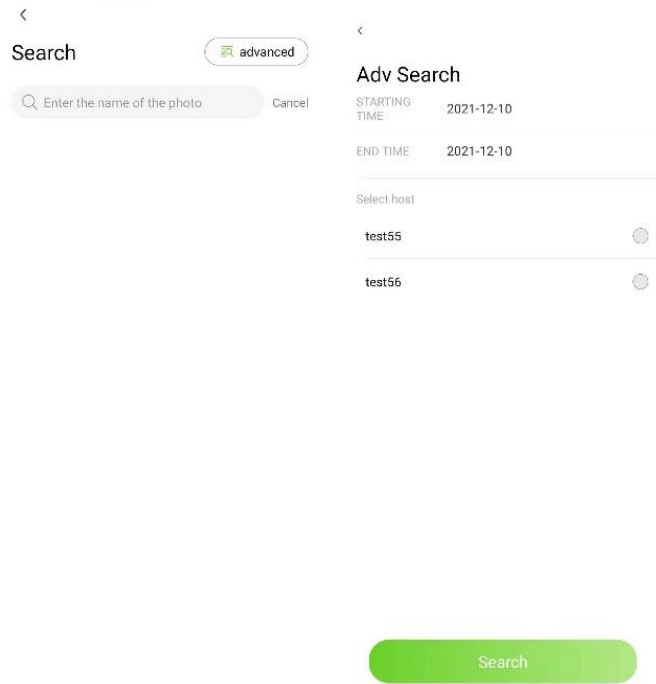


6.1. Photo

Click “  ” to enter album, captured images and recorded video preview or playback can be found.



Click the search button “  ”, support search via file name, and advanced search can support time period and device host to be searched.

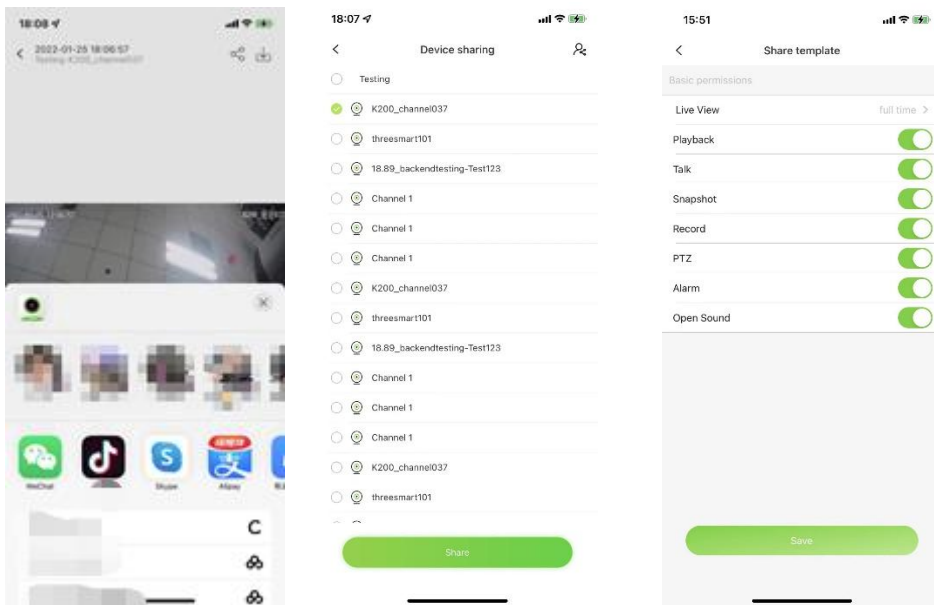


Click “advanced” to enter the page of advanced search. User can set start time and end time, choosing the device or monitoring point (host) to search, images and videos files in the local mobile storage from Easylive Plus can be inquiry.


Click multiple choice button “☑” in top right corner, image and video information of current device or monitoring point can be marked for “read already” or deleted. To quit from the multiple-choice page, click the button “⊗” .

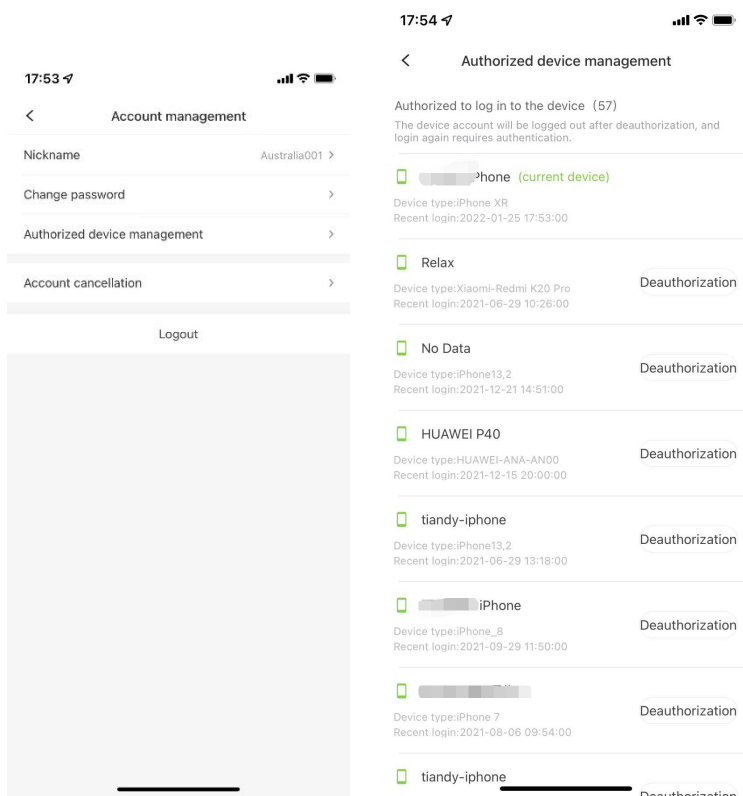
6.2. Sharing

Click “📍” to enter “My Share” interface to find the shared equipment. In addition, sharing authority can be changed and cancelled.



6.3. Account Management

Click “  ” to go to account management page. Nickname and password of account can be modified, authorized device management and account cancellation can support.



[Nickname change]: User name of account can be changed. The nickname can be 6~32 characters.


[Password change]: Password of the account can be changed. The password can be 8~16 characters, being comprised of two or more types including digit, letter and symbol.

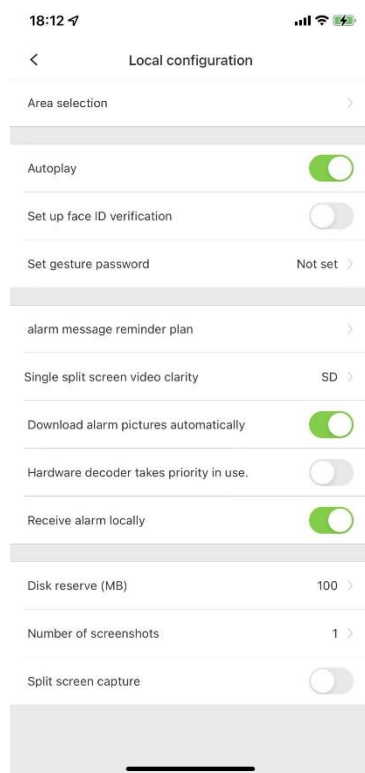
[Authorized equipment management]: Click it to show the equipment authorized already. After cancelling the equipment authorized before, the account will quit. Identity authentication will be needed for login in the next time.

[Account logout]: Account logout is irreversible. Before logout, please guarantee there is no equipment and unfinished online trade in the account. After logging out, the account will be unable to log in TIANDY APP again.

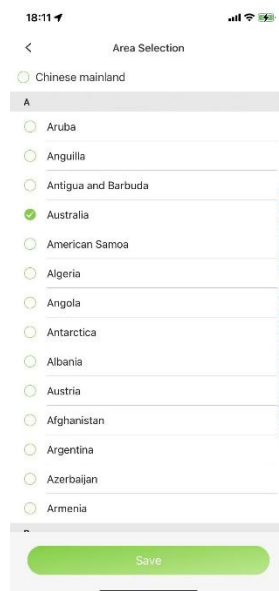
[Quit]: Quit the current account.

6.4. Local Configuration

Click “” to enter local configuration interface. Users can change login region, gesture password and face ID verification.



[Area Selection]: Choose server area, make sure device installation place and mobile app setting in the same area.

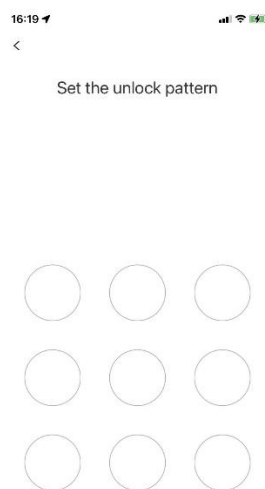


[Autoplay]: After enabling the function, videos can be played directly. Otherwise, it is needed to click “▶” on equipment interface.

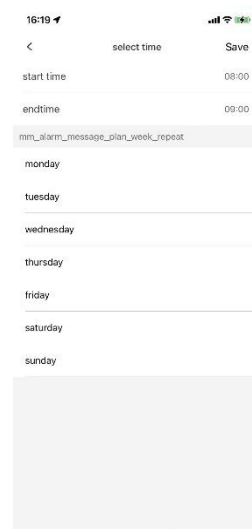
[Set up face ID verification]: When the face ID is initiated, the user

needs to validate the face ID before logging in the APP in the next time, which aims to protect the safety of the user. If both face ID password and gesture password are initiated, the face ID password prevails.

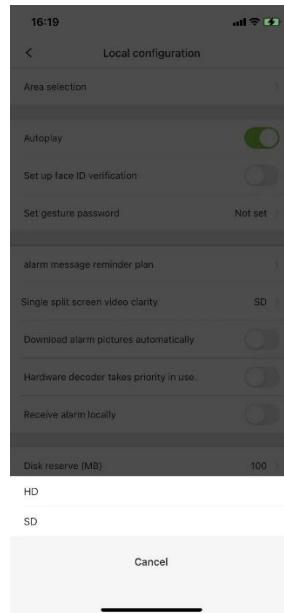
[Set gesture password]: When the gesture password is set, the user needs to input correct gesture before logging in the APP in the next time, which aims to protect the safety of the user.



[Alarm message reminder plan]: Set the time period for the mobile phone to receive the device alarm push message.



[Single split screen video clarity]: The user can select HD or SD, and the code stream of preview video on the real-time preview single split screen can be HD or SD.



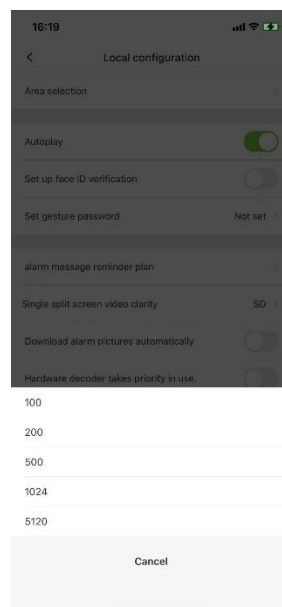
[Download alarm pictures automatically]: Upon initiating the auto download alarm image, the user can see the alarm information and corresponding alarm image on the alarm management list (users with WIFI available shall pay attention to the consumption of network traffic!)

[Hardware decoder takes priority in use]: After initiating the hardware decode, the user shall conduct the hardware decode on preview video and playback via mobile phone GPU, which can significantly boost the decoding performance.

[Receive alarm locally]: When the "Receive alarm locally" switch is on, the APP is allowed to receive the alarm notification; while the "Receive alarm locally" switch is off, this APP is forbidden receiving alarm

notification. Both IOS and Android can receive notification no matter what the app is running or the back ground status.

[Disk reserve (MB)]: The user shall check the cache directory path of the installed mobile applications regularly, and if the remaining memory is less than the internal storage (MB) of the device, the APP will automatically delete local snapshots and video files until the remaining storage is identical to the preset internal storage value.



[Number of screenshots]: When the snapshot of split screen is initiated, video images being played at currently accessible channels can be captured.

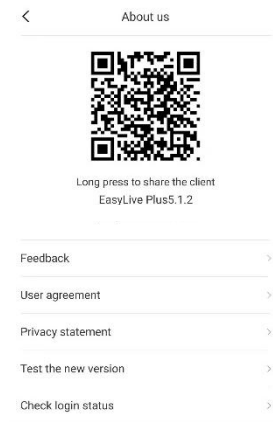
[Split screen capture]: Upon setting the number of screenshots, the number of all captured images remain same to the preset number.

Tips,

-
- Hardware decoding support the operation system of mobile phone being Android 4.2 and above.
 - For Android system, it' s not accessible for hardware decoding to achieve manual screenshot or digital zoom.
 - For Android system, hardware decoding can support the decoding of 4- channel images at the same time to the maximum (the decoding performance varies according to different mobile phone performance).
 - For IOS system, hardware decoding of H264 video coded format requires for IOS 8.0 or above, while IOS 11.0 and Iphone 6 or above for hardware decoding of H265 video coded format.

6.5. About Us

Click “” to enter “help” interface and find online help manual.

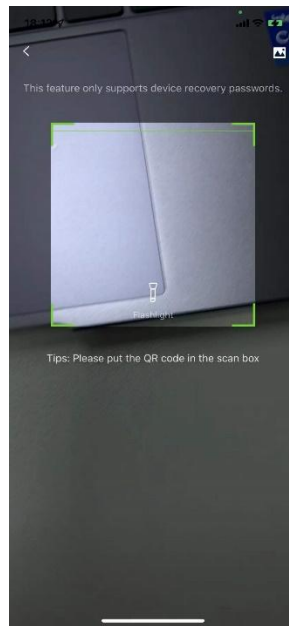


The user can feed back problems occurred during the use and opinions timely via filling in “Feedback” , Users can find use rights and interests by clicking “user agreement” and “privacy statement” . And check

the current version via “Test the new version” in order to update the latest version.

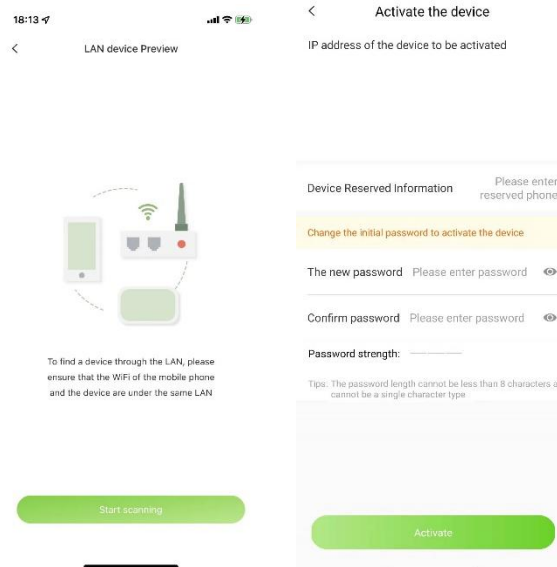
7. Common Tool


7.1. Device Recovery Password



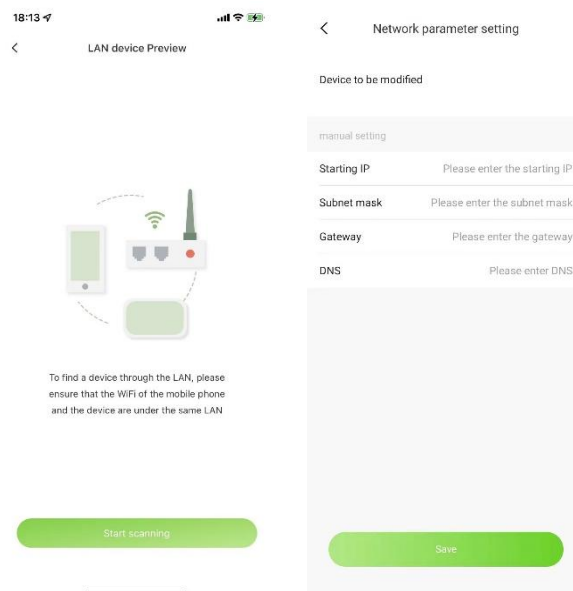
Click password reset button “🔒” , a QR code scanning box pops out. The user can obtain the device encryption string and contact information by scanning the QR code on the device, and reset the password by inputting the encryption string into the box of “please input the security code” and click “Next” .


7.2. Batch Activation



Click batch activation button “”. At the same LAN, the APP can be activated by taking the following steps: Search the device, select the inactivated device, input correct information as well user name and password for validation.

7.3. Batch modify IP



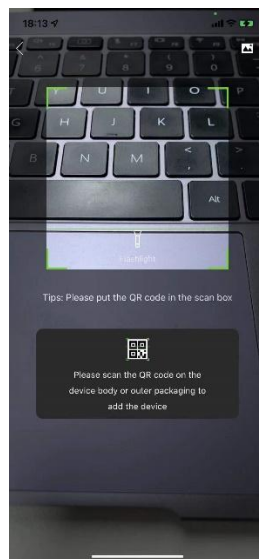
Click Batch modify IP button “”, search device in the same LAN, choose the device of which IP needs change, click “settings”, enter

initial IP of equipment, subnet mask, gateway and DNS, click “save” to change equipment IP.

7.4. Wi-Fi Configuration

This tool can be used to connect WIFI camera to common NVR devices.

The operation steps are as below,



1. Click the QR code on the body of WIFI-connected camera to enter into the camera configuration interface, and the device is started until the blue indicator turns always on;
2. Configure the router and input the password of WIFI-connected camera, and the user should remember to keep the router, mobile phone and device closely to ensure the normal networking;
3. Input or stick WIFI password, and then connect with the device network;
4. Complete the configuration.